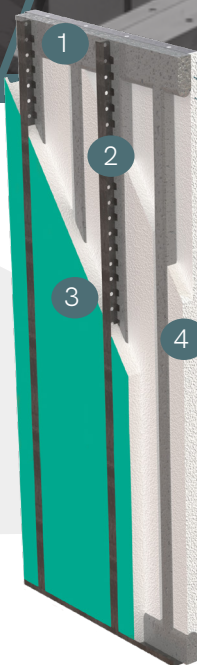


HERCUWALL™ FOR HOME BUILDERS

Build stronger, energy-efficient structures in less time with fewer trades.

Product Overview

HercuWall™ is the insulated concrete panel system that eliminates costly and time-consuming steps. Fabricated off-site and delivered ready to assemble, HercuWall delivers R31 insulation for up to 40% energy savings to provide superior strength and comfort. Streamline your building schedules and limit the variables that can cause problems, all while increasing the quality and sustainability of your project.



1	Concrete
2	ShearStrip™
3	Polyester Weather-Resistant Film
4	Insulating Foam (EPS)

Features & Benefits

- Significantly reduces the use of wood in construction that eliminates variables of sourcing and product quality.
- Maximizes recycling and eliminates jobsite waste.
- Increases jobsite efficiency and safety by having an integrated air barrier applied off site.
- Requires less labor and accelerates project schedules when compared to wood frame builds.
- Build for long term comfort and occupant safety.



“ Bottom line is that HercuWall makes me a better builder. We can deliver extremely durable, super energy-efficient homes to our customers, on time, in greater quantity, and at a higher level of predictability by utilizing HercuWall.

– Mike Mancini
President, SoDella Construction