

HERCUWALL™ FOR INSTALLERS

More jobs. Less labor. More money.

Product Overview

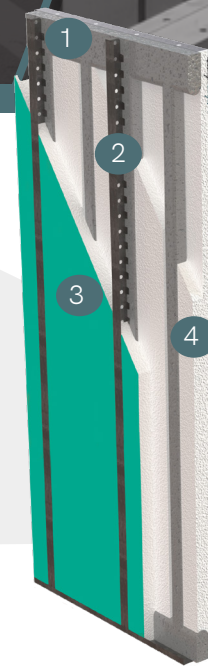
Bring a faster, better building strategy to the table. HercuWall™ is the insulated concrete panel system that eliminates costly and time-consuming steps. Fabricated off-site and delivered ready to assemble, HercuWall delivers R31 insulation for up to 40% energy savings and provides superior strength and comfort.

HercuWall is a material cost-competitive alternative to traditional building methods such as wood frame, block and steel framing.

We Know Who You Are and What You're Made Of

We've been where you are. Traditional building material products are heavy, unforgiving, hard to install and often needing rework in the field when the job simply needs to get done by sundown.

HercuWall is a whole new modern way of building, allowing the industry to build better together, the first time and every time.



1	Concrete
2	ShearStrip™
3	Polyester Weather-Resistant Film
4	Insulating Foam (EPS)



“ After working with wood framing materials the last 20 years of my career, both myself and my crews were burnt out. We were doing production work for 12 developers when we finally hit our limit. HercuWall allows us to work smarter and accomplish more. Now with HercuWall, the crews are energized and ready to work!

- Randy Sorenson, Fuerte

Building Construction Installation Doesn't Have to Be Hard

Thanks to the new HercuWall assembly, this process takes the guesswork and rework out of traditional building methods by utilizing planned precision, simplified handling, numbered panels and fast execution.

Lightweight Without Compromising on Strength

HercuWall panels are lightweight and far easier to work with than traditional building methods and other prefab wall panel systems, all while eliminating time-consuming steps and providing superior strength and comfort. All this gives you more time to win more jobs and earn more money, with less labor.

Support for an Accelerated Project Schedule

We will get you up to speed in no time by providing all the training, tools and estimating help you need to get started today. Count on us to continue to provide multi-lingual on-site support on, during and after your projects.

Ready to Get Started?

By getting educated about HercuWall, you'll not only sharpen your skills but also offer cutting-edge solutions to keep you ahead of the curve. Join us at Tremco University and build smarter, stronger and faster. Scan the QR code to learn about education and training opportunities.

