

OPTIMIZER

Another key innovation brought to market by Nudura® that will give installers and designers another product to make installation easier and faster.

Product Overview

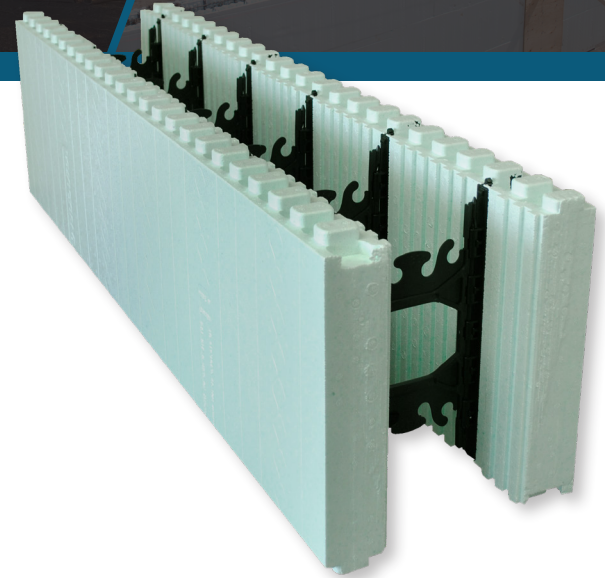
The Optimizer is part of the Nudura ICF Series of Insulated Concrete Forms. Nudura Insulated Concrete Forms provide energy efficient, cost-effective building envelope solutions serving the architectural, commercial and residential markets.

The Optimizer offers installers a variety of benefits to save time and money during installation. Designed to be used as a height adjuster at the top of the wall, the Optimizer allows installers the ability to meet 17 different stack heights from 4 ft (1.22 m) to 12 ft (3.66 m). The forms are available in Nudura's standard core sizes of 6 in (150 mm) to 12 in (300 mm) giving users the freedom to use the Optimizer on any size job from commercial to residential. Nudura installers can now achieve floor to floor heights at any 6 in (150 mm) height increment without sacrificing interlock capability of the forms by using the Nudura Optimizer.

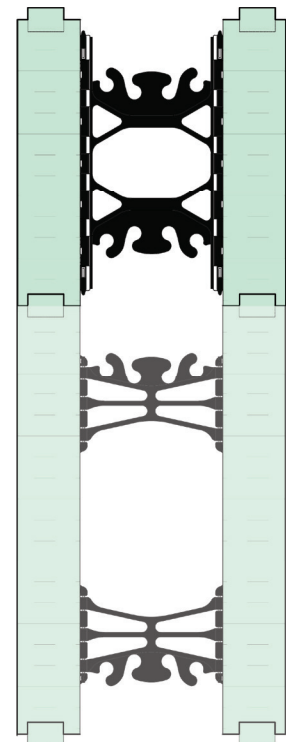
Features & Benefits

- 17 different stack heights (4 ft to 12 ft (1.22 m to 3.66 m))
- Lightweight and easy to handle
- Features Nudura's innovative technologies
- Eco-Friendly - no CFCs or HCFCs
- Recyclable

Improving the thermal performance of the building envelope is a key aspect when looking for energy efficient building materials. Optimizing R-Value with thermal mass has shown to be the best method of providing significant energy savings to building owners.

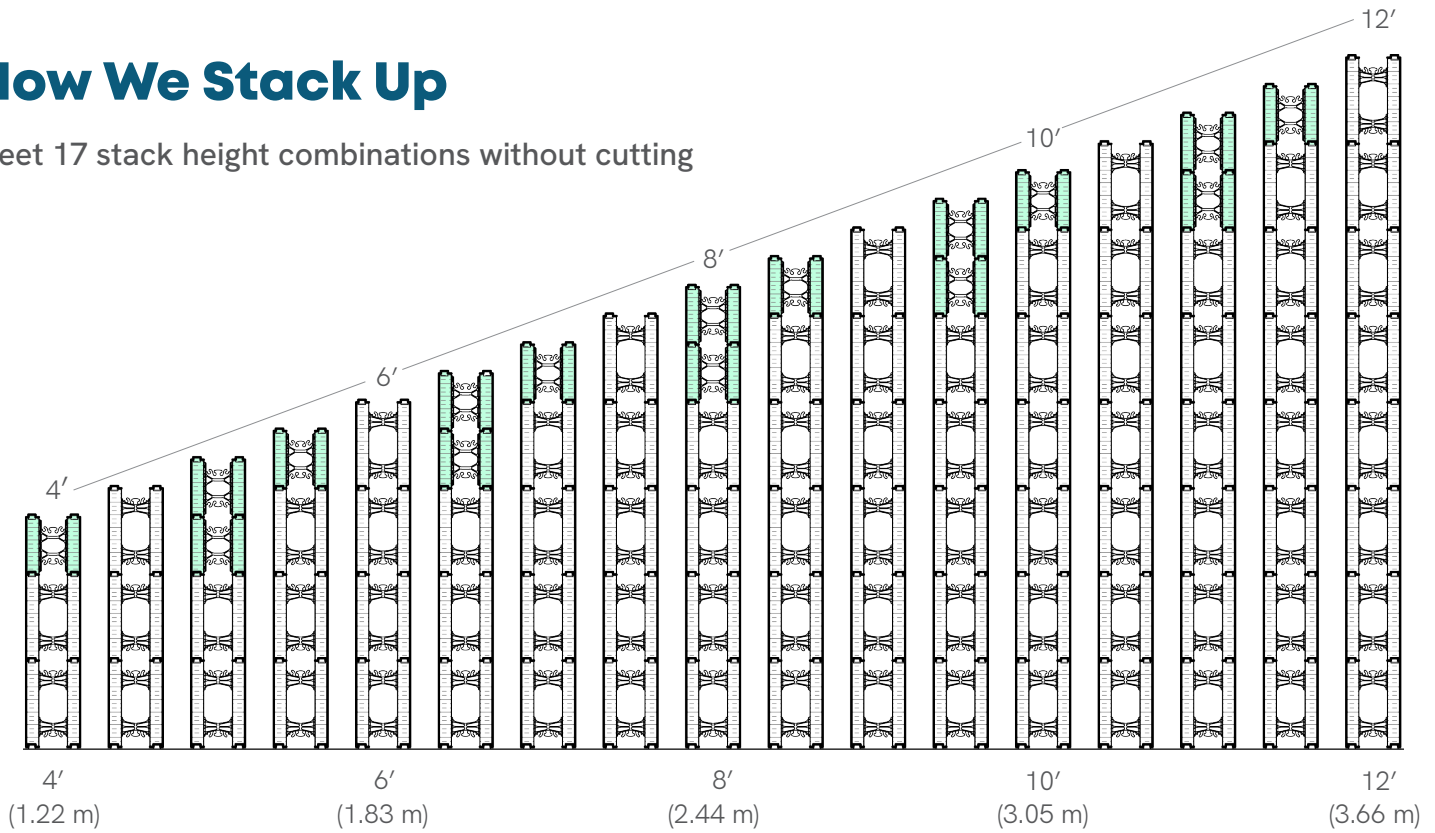


Meet 17 different stack heights
between 4 ft to 12 ft (1.22 m to 3.66 m)
without cutting



How We Stack Up

Meet 17 stack height combinations without cutting



Optimizer Wall Height Chart

Rows of 18" (457 mm) High Forms	Row(s) of Optimizer	Height of Wall
4	2	8'-0" (2.44 m)
5	1	8' 6" (2.59 m)
6	0	9'-0" (2.74 m)
5	2	9' 6" (2.90 m)
6	1	10'-0" (3.05 m)
7	0	10' 6" (3.20 m)
6	2	11'-0" (3.35 m)
7	1	11' 6" (3.51 m)
8	0	12'-0" (3.66 m)

*Dimension varies with Optimizer insert web width

