

- NOTES:
1. FOR OPTIMAL REINFORCEMENT PLACEMENT IN THE NUDURA FORM, SPACING OF HORIZONTAL REINFORCEMENT TO BE SPECIFIED AT 18" (457mm) O.C. AND VERTICAL REINFORCEMENT TO BE SPECIFIED AT MULTIPLES OF 8" (203mm) O.C.
 2. DRYVIT RECOMMENDS THAT GROUND FLOOR APPLICATIONS AND ALL FACADES EXPOSED TO ABNORMAL STRESS, HIGH TRAFFIC OR DELIBERATE IMPACT HAVE THE BASE COAT REINFORCED WITH PANZER® MESH PRIOR TO STANDARD OR STANDARD PLUS MESH. LOCATION OF HIGH IMPACT ZONES SHOULD BE INDICATED ON CONTRACT DRAWINGS.
 3. EDGE WRAPPING METHOD IS ACCEPTABLE IN LIEU OF BACK WRAPPING. WHEN USING AQUAFASH® DRYVIT REINFORCING MESH MUST BE FULLY EMBEDDED IN DRYVIT BASE COAT AT EPS EDGE AND EXTENDED ONTO SUBSTRATE 2 1/2" (64 MM) MIN.
 4. MAXIMUM THICKNESS OF EPS BUILT OUT SHAPES SHALL NOT EXCEED 13" (330 MM) AT ANY POINT MEASURED FROM THE SUBSTRATE.
 5. REFER TO PRODUCT DATA SHEETS FOR SPECIFIC APPLICATION METHODS.
 6. DRYVIT AQUAFASH® SYSTEM, TREMCO DYMONIC® 100 OR TREMCO EXOAIR® 110AT. DYMONIC® 100 MUST BE INSTALLED OVER FACE OF EXOAIR 110AT FOR COMPATIBILITY WITH DRYVIT CEMENTITIOUS ADHESIVES. DRYVIT/TREMCO FLASHING MATERIAL SHALL EXTEND 3" MIN. ONTO SHEATHING SUBSTRATE.
 7. REFER TO DRYVIT DS153 FOR ADDITIONAL INFORMATION REGARDING SEALANTS FOR USE WITH EIFS.
 8. RASP THE SURFACE OF THE NUDURA FORMWORK PRIOR TO APPLICATION OF THE AIR/WATER-RESISTIVE BARRIER AND DETAIL COMPONENTS.

Nudura Deck

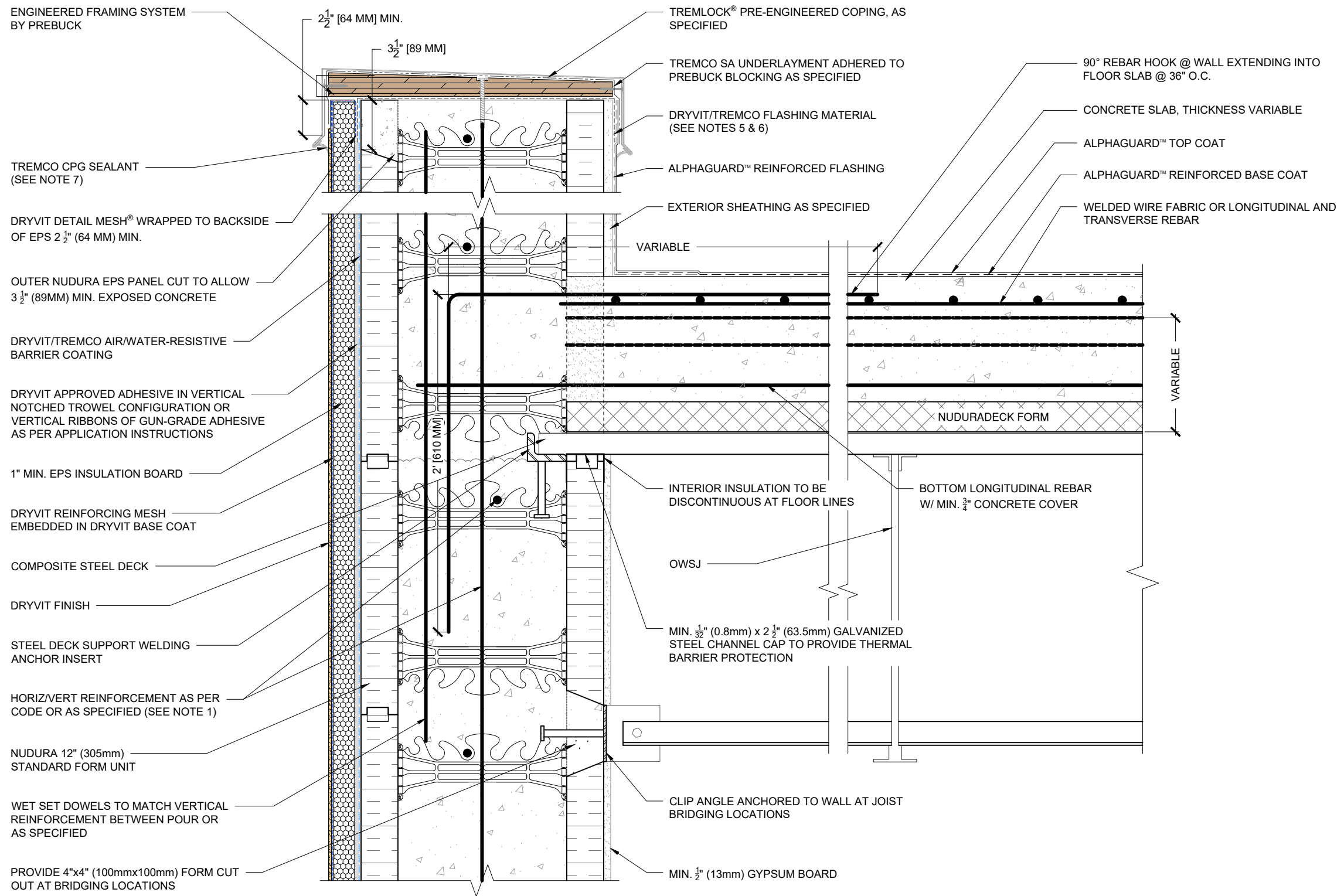


Detail: Nudura Deck at Parapet		Scale: 1:5
Drawn by: KAB	Checked by: CK	Date: 4/27/2026
Revision #: 00	Revised by: -	

This detail is for general informational purposes only. The project design professional determines, in its sole discretion, whether this detail or a functionally equivalent detail is best suited for the project with respect to any architecture, engineering, and design requirements, including any local building code requirements. If this document is not reviewed and the product is not approved for use by a licensed design professional, the customer agrees that the detail may contain substantive flaws requiring correction, and hereby releases Tremco CPG Inc. from any and all liability related to the design and installation of the product. This detail is subject to change without notice. Contact Tremco to ensure you have the most recent version.

File Name:
29554







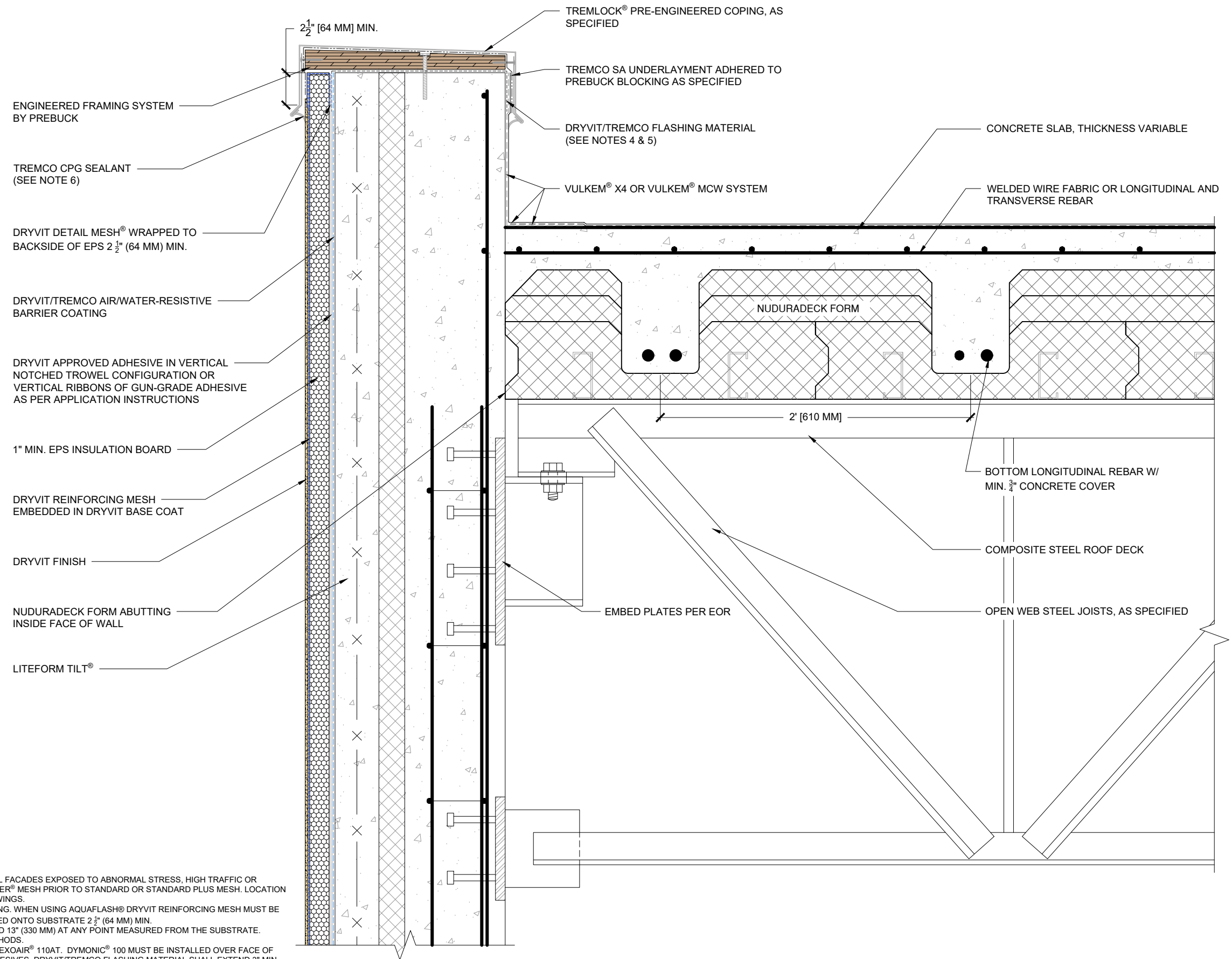
NOTES:

- FOR OPTIMAL REINFORCEMENT PLACEMENT IN THE NUDURA FORM, SPACING OF HORIZONTAL REINFORCEMENT TO BE SPECIFIED AT 18" (457mm) O.C. AND VERTICAL REINFORCEMENT TO BE SPECIFIED AT MULTIPLES OF 8" (203mm) O.C.
- DRYVIT RECOMMENDS THAT GROUND FLOOR APPLICATIONS AND ALL FACADES EXPOSED TO ABNORMAL STRESS, HIGH TRAFFIC OR DELIBERATE IMPACT HAVE THE BASE COAT REINFORCED WITH PANZER® MESH PRIOR TO STANDARD OR STANDARD PLUS MESH. LOCATION OF HIGH IMPACT ZONES SHOULD BE INDICATED ON CONTRACT DRAWINGS.
- EDGE WRAPPING METHOD IS ACCEPTABLE IN LIEU OF BACK WRAPPING. WHEN USING AQUAFASH® DRYVIT REINFORCING MESH MUST BE FULLY EMBEDDED IN DRYVIT BASE COAT AT EPS EDGE AND EXTENDED ONTO SUBSTRATE 2 1/2" (64 MM) MIN.
- MAXIMUM THICKNESS OF EPS BUILT OUT SHAPES SHALL NOT EXCEED 13" (330 MM) AT ANY POINT MEASURED FROM THE SUBSTRATE.
- REFER TO PRODUCT DATA SHEETS FOR SPECIFIC APPLICATION METHODS.
- DRYVIT AQUAFASH® SYSTEM, TREMCO DYMONIC® 100 OR TREMCO EXOAIR® 110AT. DYMONIC® 100 MUST BE INSTALLED OVER FACE OF EXOAIR 110AT FOR COMPATIBILITY WITH DRYVIT CEMENTITIOUS ADHESIVES. DRYVIT/TREMCO FLASHING MATERIAL SHALL EXTEND 3" MIN. ONTO SHEATHING SUBSTRATE.
- REFER TO DRYVIT DS153 FOR ADDITIONAL INFORMATION REGARDING SEALANTS FOR USE WITH EIFS.
- RASP THE SURFACE OF THE NUDURA FORMWORK PRIOR TO APPLICATION OF THE AIR/WATER-RESISTIVE BARRIER AND DETAIL COMPONENTS.

Nudura Deck

			Detail: Nudura Deck at Parapet		File Name:	
Drawn by: KAB		Checked by: CK		Scale: 1:8		29593 R1
Revision #: 01		Revised by: KAB		Date: 4/27/2026		
Nudura Technical Support: 866-468-6299 International: +1 705-726-9499			www.tremcocpg.com			

This detail is for general informational purposes only. The project design professional determines, in its sole discretion, whether this detail or a functionally equivalent detail is best suited for the project with respect to any architecture, engineering, and design requirements, including any local building code requirements. If this document is not reviewed and the product is not approved for use by a licensed design professional, the customer agrees that the detail may contain substantive flaws requiring correction, and hereby releases Tremco CPG Inc. from any and all liability related to the design and installation of the product. This detail is subject to change without notice. Contact Tremco to ensure you have the most recent version.



ENGINEERED FRAMING SYSTEM BY PREBUCK

TREMCO CPG SEALANT (SEE NOTE 6)

DRYVIT DETAIL MESH® WRAPPED TO BACKSIDE OF EPS 2 1/2" (64 MM) MIN.

DRYVIT/TREMCO AIR/WATER-RESISTIVE BARRIER COATING

DRYVIT APPROVED ADHESIVE IN VERTICAL NOTCHED TROWEL CONFIGURATION OR VERTICAL RIBBONS OF GUN-GRADE ADHESIVE AS PER APPLICATION INSTRUCTIONS

1" MIN. EPS INSULATION BOARD

DRYVIT REINFORCING MESH EMBEDDED IN DRYVIT BASE COAT

DRYVIT FINISH

NUDURADECK FORM ABUTTING INSIDE FACE OF WALL

LITEFORM TILT®

TREMLOCK® PRE-ENGINEERED COPING, AS SPECIFIED

TREMCO SA UNDERLAYMENT ADHERED TO PREBUCK BLOCKING AS SPECIFIED

DRYVIT/TREMCO FLASHING MATERIAL (SEE NOTES 4 & 5)

VULKEM® X4 OR VULKEM® MCW SYSTEM

CONCRETE SLAB, THICKNESS VARIABLE

WELDED WIRE FABRIC OR LONGITUDINAL AND TRANSVERSE REBAR

NUDURADECK FORM

2' [610 MM]

BOTTOM LONGITUDINAL REBAR W/ MIN. 3/4" CONCRETE COVER

COMPOSITE STEEL ROOF DECK

OPEN WEB STEEL JOISTS, AS SPECIFIED

EMBED PLATES PER EOR

- NOTES:
1. DRYVIT RECOMMENDS THAT GROUND FLOOR APPLICATIONS AND ALL FACADES EXPOSED TO ABNORMAL STRESS, HIGH TRAFFIC OR DELIBERATE IMPACT HAVE THE BASE COAT REINFORCED WITH PANZER® MESH PRIOR TO STANDARD OR STANDARD PLUS MESH. LOCATION OF HIGH IMPACT ZONES SHOULD BE INDICATED ON CONTRACT DRAWINGS.
 2. EDGE WRAPPING METHOD IS ACCEPTABLE IN LIEU OF BACK WRAPPING. WHEN USING AQUAFLASH® DRYVIT REINFORCING MESH MUST BE FULLY EMBEDDED IN DRYVIT BASE COAT AT EPS EDGE AND EXTENDED ONTO SUBSTRATE 2 1/2" (64 MM) MIN.
 3. MAXIMUM THICKNESS OF EPS BUILT OUT SHAPES SHALL NOT EXCEED 13" (330 MM) AT ANY POINT MEASURED FROM THE SUBSTRATE.
 4. REFER TO PRODUCT DATA SHEETS FOR SPECIFIC APPLICATION METHODS.
 5. DRYVIT AQUAFLASH® SYSTEM, TREMCO DYMONIC® 100 OR TREMCO EXOAIR® 110AT. DYMONIC® 100 MUST BE INSTALLED OVER FACE OF EXOAIR 110AT FOR COMPATIBILITY WITH DRYVIT CEMENTITIOUS ADHESIVES. DRYVIT/TREMCO FLASHING MATERIAL SHALL EXTEND 3" MIN. ONTO SUBSTRATE.
 6. REFER TO DRYVIT DS153 FOR ADDITIONAL INFORMATION REGARDING SEALANTS FOR USE WITH EIFS.

Nudura Deck

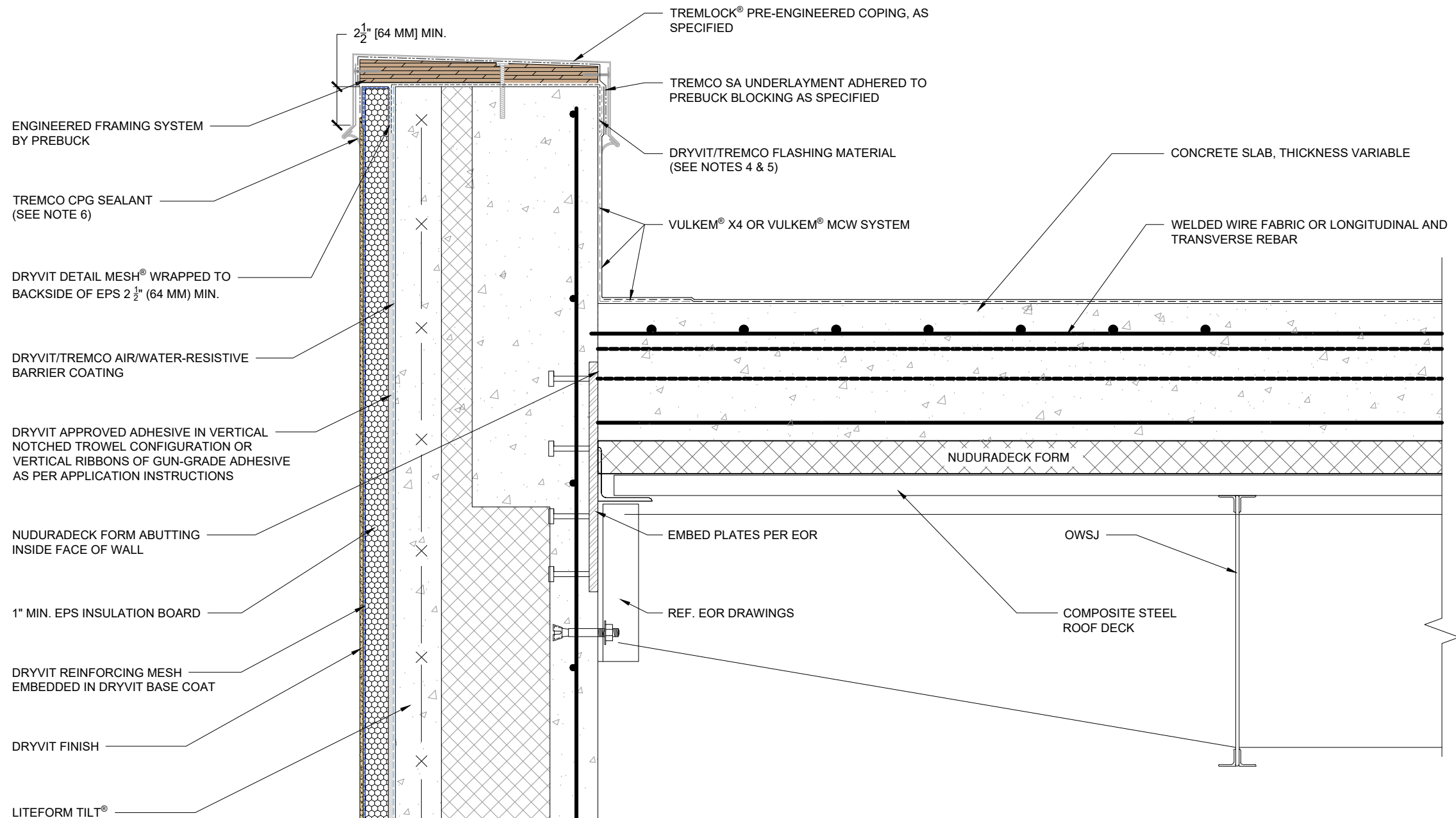


Detail: Nudura Deck at Parapet		Scale: 1:8
Drawn by: KAB	Checked by: CK	Date: 4/27/2026
Revision #: 00	Revised by: -	

This detail is for general informational purposes only. The project design professional determines, in its sole discretion, whether this detail or a functionally equivalent detail is best suited for the project with respect to any architecture, engineering, and design requirements, including any local building code requirements. If this document is not reviewed and the product is not approved for use by a licensed design professional, the customer agrees that the detail may contain substantive flaws requiring correction, and hereby releases Tremco CPG Inc. from any and all liability related to the design and installation of the product. This detail is subject to change without notice. Contact Tremco to ensure you have the most recent version.

File Name:
29594





- NOTES:
1. DRYVIT RECOMMENDS THAT GROUND FLOOR APPLICATIONS AND ALL FACADES EXPOSED TO ABNORMAL STRESS, HIGH TRAFFIC OR DELIBERATE IMPACT HAVE THE BASE COAT REINFORCED WITH PANZER® MESH PRIOR TO STANDARD OR STANDARD PLUS MESH. LOCATION OF HIGH IMPACT ZONES SHOULD BE INDICATED ON CONTRACT DRAWINGS.
 2. EDGE WRAPPING METHOD IS ACCEPTABLE IN LIEU OF BACK WRAPPING. WHEN USING AQUAFLASH® DRYVIT REINFORCING MESH MUST BE FULLY EMBEDDED IN DRYVIT BASE COAT AT EPS EDGE AND EXTENDED ONTO SUBSTRATE 2 1/2" (64 MM) MIN.
 3. MAXIMUM THICKNESS OF EPS BUILT OUT SHAPES SHALL NOT EXCEED 13" (330 MM) AT ANY POINT MEASURED FROM THE SUBSTRATE.
 4. REFER TO PRODUCT DATA SHEETS FOR SPECIFIC APPLICATION METHODS.
 5. DRYVIT AQUAFLASH® SYSTEM, TREMCO DYMONIC® 100 OR TREMCO EXOAIR® 110AT. DYMONIC® 100 MUST BE INSTALLED OVER FACE OF EXOAIR 110AT FOR COMPATIBILITY WITH DRYVIT CEMENTITIOUS ADHESIVES. DRYVIT/TREMCO FLASHING MATERIAL SHALL EXTEND 3" MIN. ONTO SUBSTRATE.
 6. REFER TO DRYVIT DS153 FOR ADDITIONAL INFORMATION REGARDING SEALANTS FOR USE WITH EIFS.

Nudura Deck



Detail: Nudura Deck at Parapet

Drawn by: KAB

Checked by: CK

Scale: 1:8

Revision #: 01

Revised by: KAB

Date: 4/27/2026

www.tremcocpg.com

This detail is for general informational purposes only. The project design professional determines, in its sole discretion, whether this detail or a functionally equivalent detail is best suited for the project with respect to any architecture, engineering, and design requirements, including any local building code requirements. If this document is not reviewed and the product is not approved for use by a licensed design professional, the customer agrees that the detail may contain substantive flaws requiring correction, and hereby releases Tremco CPG Inc. from any and all liability related to the design and installation of the product. This detail is subject to change without notice. Contact Tremco to ensure you have the most recent version.

File Name:

29595 R1

